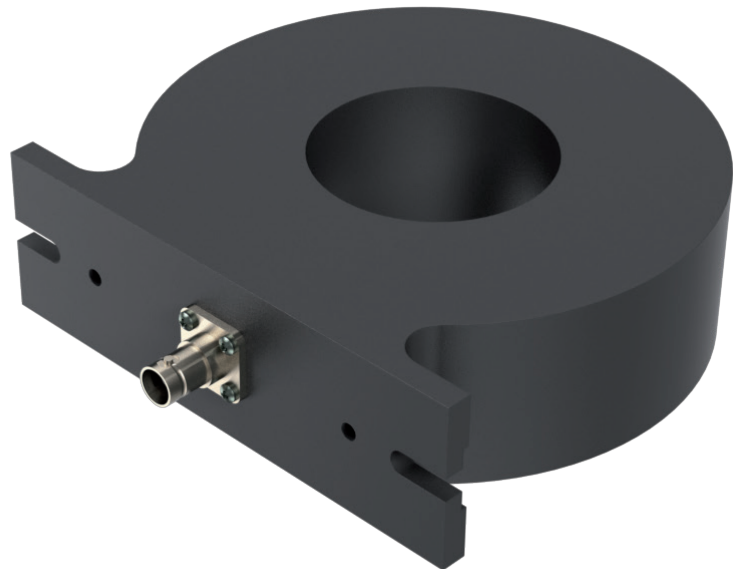




Datasheet LILCO 58 Series

WIDE-BAND TERMINATED CURRENT TRANSFORMER

- Passive probe for pulsed currents
- Low frequency or high saturation devices
- Ultra low droop
- High I-t capability
- Very high DC saturation currents
- Integrated 50Ω termination



PMK LILCO 58 Series of wide-band current transformers are capable of faithfully reproducing current waveforms over a bandwidth which extends from the sub-Hertz area to 30 MHz. Whether the requirement is to measure pulses of thousands of amps or milliamp currents in lf or hf power electronic circuitry, it will be found that PMK LILCO 58 Series current transformers are capable of satisfying the application.

This datasheet supersedes all previously published material. Specifications that are not marked as guaranteed are published as general information to the user. The instrument should have warmed up for at least 20 minutes and the environmental conditions must not exceed the specified limits of the probe. Note that specifications are subject to change without notice.

Manufacturer

PMK Mess- und Kommunikationstechnik GmbH
Königsteiner Str. 98
65812 Bad Soden am Taunus, Germany

Internet: www.pmk.de

Tel: +49 (0) 6196 5927 - 930

E-Mail: sales@pmk.de

Fax: +49 (0) 6196 5927 - 939

Specifications

Model number	Output [V/A]	RECTANGULAR PULSE				SINEWAVE		I _{peak} /f [A/Hz]	DC sat. Current I _{sat} , [A]	Max rms current I _{rms} [A]	Peak current I _{peak} [A]
		Droop [%/ms]	Rise time [ns]	I-t capability		- 3dB Bandwidth					
				No bias [mA s]	With bias [mA s]	I _f [Hz]	h _f [MHz]				
58EH010	0,01	0,38	80	13000	24000	0,5	5	85	55	400	25000
58MH010	0,01	0,025	80	13000	24000	0,04	5	85	2	400	25000
58E0020	0,02	0,6	200	12000	20000	0,8	2	70	55	500	20000
58M0020	0,02	0,04	200	12000	20000	0,06	2	70	2	500	20000
58E0050	0,05	1,5	80	3400	6000	2,5	5	20	55	200	10000
58M0050	0,05	0,1	80	3400	6000	0,15	5	20	2	200	10000
58E0100	0,1	6	40	1000	1800	10	10	6	55	100	5000
58EH100	0,1	15	20	400	700	20	20	2	55	100	2500
58M0100	0,1	0,3	40	1000	1800	0,5	10	6	2	100	5000
58MH100	0,1	1	20	400	700	1	20	2	2	100	2500
58E0200	0,2	25	20	200	360	40	20	1	55	50	2500
58M0200	0,2	2	20	200	360	4	20	1	2	50	2500
58M0500	0,5	9	20	40	70	15	20	0,2	2	20	1000
58M1000	1	30	14	10	18	40	30	0,06	2	12	500

Dimensions

