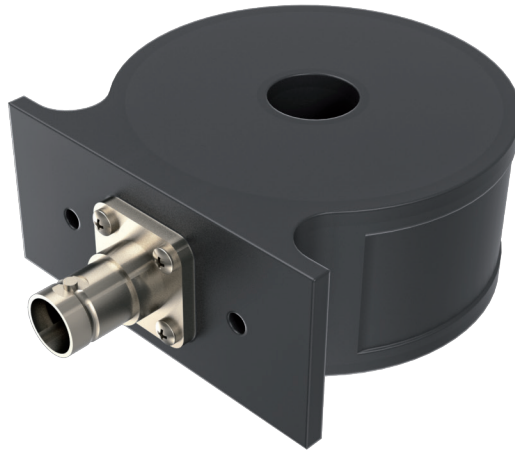




# Datasheet LILCO 13 Series

WIDE-BAND TERMINATED CURRENT TRANSFORMER

- Passive probe for pulsed currents
- Low frequency or high saturation devices
- Ultra low droop
- High I-t capability
- Very high DC saturation currents
- Integrated 50 $\Omega$  termination



PMK LILCO 13 Series of wide-band current transformers are capable of faithfully reproducing current waveforms over a bandwidth which extends from the sub-Hertz area to greater than 50 MHz. Whether the requirement is to measure pulses of thousands of amps or milliamp currents in lf or hf power electronic circuitry, it will be found that PMK LILCO 13 Series current transformers are capable of satisfying the application.

This datasheet supersedes all previously published material. Specifications that are not marked as guaranteed are published as general information to the user. The instrument should have warmed up for at least 20 minutes and the environmental conditions must not exceed the specified limits of the probe. Note that specifications are subject to change without notice.

## Manufacturer

PMK Mess- und Kommunikationstechnik GmbH  
Königsteiner Str. 98  
65812 Bad Soden am Taunus, Germany

Internet: [www.pmk.de](http://www.pmk.de)

Tel: +49 (0) 6196 5927 - 930

E-Mail: [sales@pmk.de](mailto:sales@pmk.de)

Fax: +49 (0) 6196 5927 - 939

## Specifications

| Model number | Output [V/A] | RECTANGULAR PULSE |                |                |                  | SINEWAVE        |          | I <sub>peak</sub> /f [A/Hz] | DC sat. Current I <sub>sat</sub> [A] | Max rms current I <sub>rms</sub> [A] | Peak current I <sub>peak</sub> [A] |
|--------------|--------------|-------------------|----------------|----------------|------------------|-----------------|----------|-----------------------------|--------------------------------------|--------------------------------------|------------------------------------|
|              |              | Droop [%/ms]      | Rise time [ns] | I-t capability |                  | - 3dB Bandwidth |          |                             |                                      |                                      |                                    |
|              |              |                   |                | No bias [mA s] | With bias [mA s] | lf [Hz]         | hf [MHz] |                             |                                      |                                      |                                    |
| 13E0050      | 0,05         | 3,3               | 40             | 660            | 1200             | 5,3             | 10       | 4,1                         | 22                                   | 100                                  | 10000                              |
| 13G0050      | 0,05         | 0,25              | 40             | 1200           | 2200             | 0,5             | 10       | 8                           | 3                                    | 100                                  | 10000                              |
| 13W0050      | 0,05         | 0,06              | 40             | 1200           | 2200             | 0,1             | 10       | 3                           | 0,25                                 | 100                                  | 10000                              |
| 13E0100      | 0,1          | 10                | 16             | 220            | 400              | 16              | 25       | 1,4                         | 22                                   | 60                                   | 5000                               |
| 13G0100      | 0,1          | 1                 | 16             | 400            | 700              | 1,6             | 25       | 2,5                         | 3                                    | 60                                   | 5000                               |
| 13W0100      | 0,1          | 0,15              | 16             | 300            | 540              | 0,3             | 25       | 2                           | 0,25                                 | 60                                   | 5000                               |
| 13E0200      | 0,2          | 37                | 14             | 60             | 110              | 60              | 30       | 0,38                        | 22                                   | 33                                   | 2500                               |
| 13G0200      | 0,2          | 4                 | 14             | 100            | 200              | 10              | 30       | 0,7                         | 3                                    | 33                                   | 2500                               |
| 13W0200      | 0,2          | 0,6               | 14             | 40             | 70               | 1               | 30       | 0,25                        | 0,25                                 | 33                                   | 2500                               |
| 13E0500      | 0,5          | 220               | 10             | 10             | 18               | 360             | 40       | 0,062                       | 22                                   | 14                                   | 1000                               |
| 13G0500      | 0,5          | 20                | 10             | 15             | 30               | 35              | 40       | 0,12                        | 3                                    | 14                                   | 1000                               |
| 13W0500      | 0,5          | 3                 | 10             | 7              | 13               | 5               | 40       | 0,04                        | 0,25                                 | 14                                   | 1000                               |
| 13E1000      | 1            | 880               | 7              | 2,5            | 4,5              | 1400            | 60       | 0,016                       | 22                                   | 7                                    | 500                                |
| 13G1000      | 1            | 70                | 7              | 4              | 7                | 130             | 60       | 0,03                        | 3                                    | 7                                    | 500                                |
| 13W1000      | 1            | 12                | 7              | 4              | 7                | 30              | 60       | 0,02                        | 0,25                                 | 7                                    | 500                                |

## Dimensions

