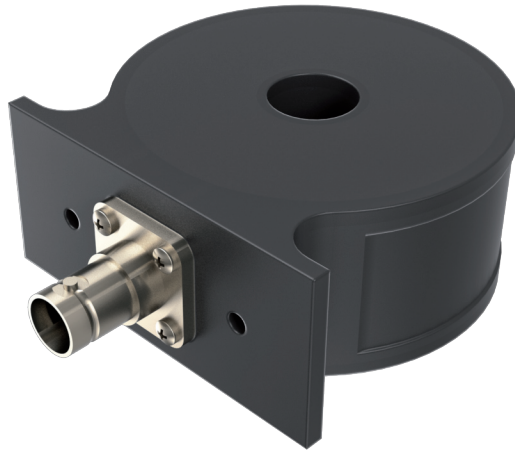




Datasheet LILCO 13 Series

WIDE-BAND TERMINATED CURRENT TRANSFORMER

- Passive probe for pulsed currents
- Low frequency or high saturation devices
- Ultra low droop
- High I-t capability
- Very high DC saturation currents



PMK LILCO 13 Series of wide-band current transformers are capable of faithfully reproducing current waveforms over a bandwidth which extends from the sub-hertz area to greater than 50 MHz. Whether the requirement is to measure pulses of thousands of amps or milliamp currents in lf or hf power electronic circuitry, it will be found that PMK LILCO 13 Series current transformers are capable of satisfying the application.

This datasheet supersedes all previously published material. Specifications that are not marked as guaranteed are published as general information to the user. The instrument should have warmed up for at least 20 minutes and the environmental conditions must not exceed the specified limits of the probe. Note that specifications are subject to change without notice.

Manufacturer

PMK Mess- und Kommunikationstechnik GmbH
Königsteiner Str. 98
65812 Bad Soden am Taunus, Germany

Internet: www.pmk.de

Tel: +49 (0) 6196 5927 - 930

E-Mail: sales@pmk.de

Fax: +49 (0) 6196 5927 - 939

Specifications

Model number	Output V/A	RECTANGULAR PULSE				SINEWAVE		I _{peak} /f A/Hz	DC sat. Current I _{sat} , A	Max rms current I _{rms} A	Peak current I _{peak} A
		Droop %/ms	Rise time ns	I-t capability		3db Bandwidth					
				No bias mA s	With bias mA s	lf Hz	hf MHz				
13E0020	0,02	1,4	140	1600	2900	2,2	3	10	22	200	25000
13E0050	0,05	3,3	40	660	1200	5,3	10	4,1	22	100	10000
13G0050	0,05	0,25	40	1200	2200	0,5	10	8	3	100	10000
13W0050	0,05	0,06	40	1200	2200	0,1	10	3	0,25	100	10000
13E0100	0,1	10	16	220	400	16	25	1,4	22	60	5000
13G0100	0,1	1	16	400	700	1,6	25	2,5	3	60	5000
13W0100	0,1	0,15	16	300	540	0,3	25	2	0,25	60	5000
13E0200	0,2	37	14	60	110	60	30	0,38	22	33	2500
13G0200	0,2	4	14	100	200	10	30	0,7	3	33	2500
13W0200	0,2	0,6	14	40	70	1	30	0,25	0,25	33	2500
13E0500	0,5	220	10	10	18	360	40	0,062	22	14	1000
13G0500	0,5	20	10	15	30	35	40	0,12	3	14	1000
13W0500	0,5	3	10	7	13	5	40	0,04	0,25	14	1000
13E1000	1	880	7	2,5	4,5	1400	60	0,016	22	7	500
13G1000	1	70	7	4	7	130	60	0,03	3	7	500
13W1000	1	12	7	4	7	30	60	0,02	0,25	7	500
13W5000	5	320	4	0,12	0,2	550	100	0,0004	0,25	2	50

Dimensions

